



**Model Number**

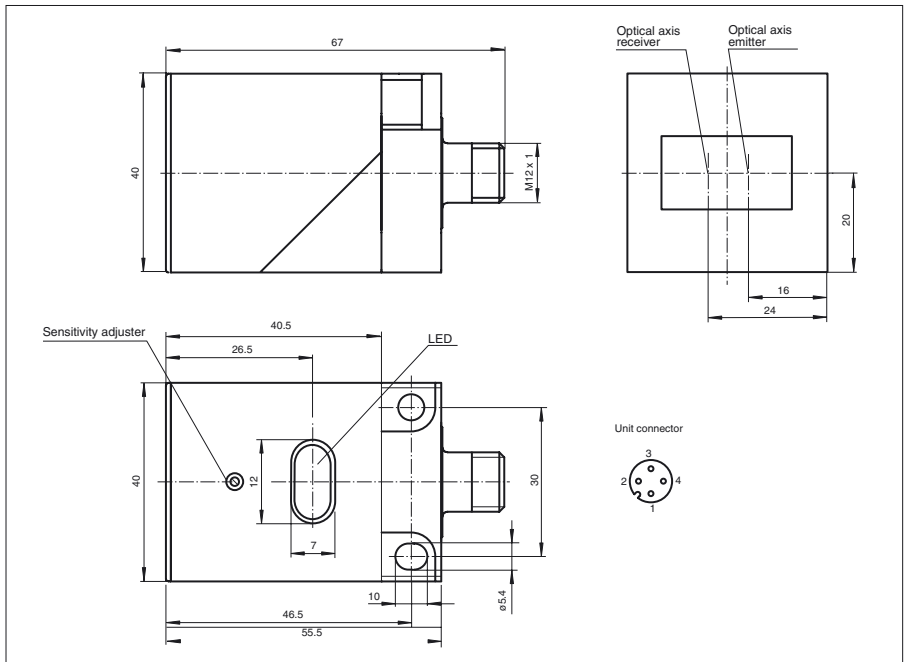
**OBS6000-L2-E5-V1**

Retroreflective sensor  
with 4-pin, M12 connector

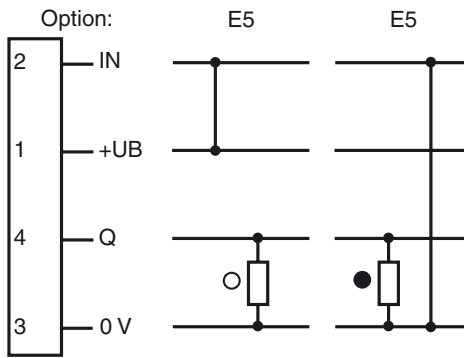
**Features**

- Glare protected with polarization filter
- Visible red light
- Positioning of the sensor head is possible in two planes
- Multitude of mounting possibilities
- Mounting only with one tool: the screwdriver
- Light/dark ON, programmable

**Dimensions**



**Electrical connection**



○ = Light on  
● = Dark on

Release date: 2007-06-19 16:44 Date of issue: 2011-01-26 049791\_ENG.xml

Subject to modifications without notice

Pepperl+Fuchs Group  
www.pepperl-fuchs.com

USA: +1 330 486 0001  
fa-info@us.pepperl-fuchs.com

Germany: +49 621 776-4411  
fa-info@pepperl-fuchs.com

Copyright Pepperl+Fuchs

Singapore: +65 6779 9091  
fa-info@sg.pepperl-fuchs.com

**Technical data****General specifications**

Effective detection range	0 ... 6000 mm
Reflector distance	600 ... 6000 mm
Threshold detection range	9 m (with H85 reflector)
Light source	LED
Light type	modulated visible red light
Approvals	CE
Ambient light limit	15000 Lux

**Indicators/operating means**

Function display	LED yellow: switching state LED red: pre-fault indication
Controls	sensitivity adjustment

**Electrical specifications**

Operating voltage	$U_B$	10 ... 30 V DC
Ripple		10 %
No-load supply current	$I_0$	$\leq 20$ mA

**Input**

Control input	light on +UB dark on: 0 V
---------------	------------------------------

**Output**

Switching type	light/dark on	
Signal output	1 PNP output, short-circuit protected, protected from reverse polarity, open collector	
Switching voltage	max. 30 V DC	
Switching current	max. 250 mA	
Voltage drop	$U_d$	$\leq 1.5$ V
Switching frequency	$f$	$\leq 200$ Hz
Response time		$\leq 2.5$ ms

**Standard conformity**

Standards	EN 60947-5-2
-----------	--------------

**Ambient conditions**

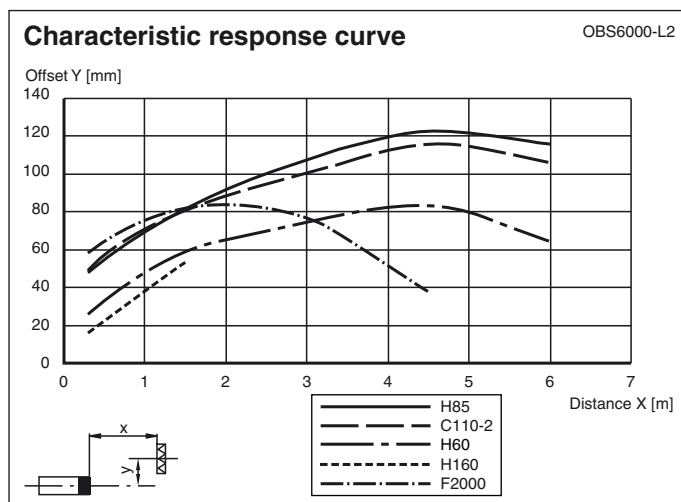
Ambient temperature	-25 ... 70 °C (-13 ... 158 °F)
Storage temperature	-40 ... 80 °C (-40 ... 176 °F)

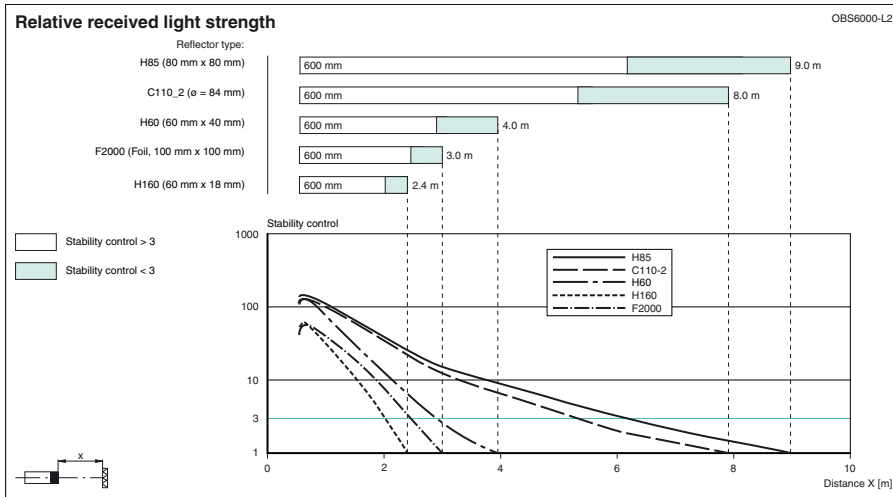
**Mechanical specifications**

Protection degree	IP67
Connection	connector M12 x 1, 4-pin
Material	
Housing	PBT
Optical face	scratch resistant plastic lens
Mass	60 g

**Approvals and certificates**

CCC approval	Products with a maximum operating voltage of $\leq 36$ V do not bear a CCC marking because they do not require approval.
--------------	--

**Curves/Diagrams**



Release date: 2007-06-19 16:44 Date of issue: 2011-01-26 049791\_ENG.xml